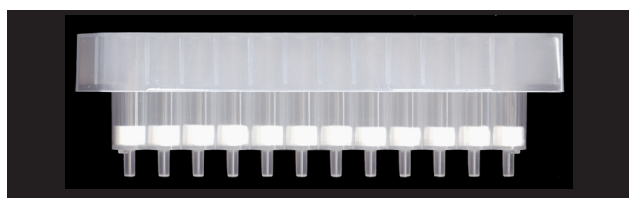


## 384-Well Filter Plates

### General Filtration 384-well Filter Plates

Cat. No.	Description	Qty
38407	384-Well Filter Plates, 140µL, Glass Fiber, 0.7µm	10
38412	384-Well Filter Plates, 140µL, Glass Fiber, 1.2µm	10
38405	384-Well Filter Plates, 140µL, Glass Fiber, 5.0µm	10
384451	384-Well Filter Plates, .045µm PVDF, 140µL/well, Long Drip	10
384603	384-Well Filter Plate, Poly DVB SPE, 3mg / well	Ea



## 96-Well SPE and DME Plates

### 2.0mL 96-Well Extraction Plates

Our 2.2mL/well SPE plates are made from medical grade virgin polypropylene and have a standard footprint. Each well is individually fritted and has a larger exit diameter to enable faster flow rate.

Applications: Samples prepared in solid-phase extraction in drug development, drug analysis and pharmacokinetics.

### 1.0mL 96-Well Extraction Plates

Our silica based sorbents resist occlusion by proteinaceous materials from samples. We combine size exclusion and absorption chromatography for better flow characteristics, enhanced detection and cleaner extracts. Each well is individually fritted.

#### C8

Cat. No.	Description	Qty
9610C825	C8, 1.0mL/25mg Bed	Each
9610C850	C8, 1.0mL/50mg Bed	Each
9610C8100	C8, 1.0mL/100mg Bed	Each

#### C18

9610C1825	C18, 1.0mL/25mg Bed	Each
9610C1850	C18, 1.0mL/50mg Bed	Each
9610C18100	C18, 1.0mL/100mg Bed	Each

#### Silica

9610Si25	Silica, 1.0mL/25mg Bed	Each
9610Si50	Silica, 1.0mL/50mg Bed	Each
9610Si100	Silica, 1.0mL/100mg Bed	Each

#### Amino (NH<sub>2</sub>)

9610NH25	Amino, 1.0mL/25mg Bed	Each
9610NH50	Amino, 1.0mL/50mg Bed	Each
9610NH100	Amino, 1.0mL/100mg Bed	Each

#### Strong Anion Exchanger (SAX)

9610SAX25	SAX, 1.0mL/25mg Bed	Each
9610SAX50	SAX, 1.0mL/50mg Bed	Each
9610SAX100	SAX, 1.0mL/100mg Bed	Each

#### Strong Cation Exchanger (SCX)

9610SCX25	SCX, 1.0mL/25mg Bed	Each
9610SCX50	SCX, 1.0mL/50mg Bed	Each
9610SCX100	SCX, 1.0mL/100mg Bed	Each

#### C8

Cat. No.	Description	Qty
9620C850	C8, 2.0mL/50mg Bed	Each
9620C8100	C8, 2.0mL/100mg Bed	Each

#### C18

9620C1850	C18, 2.0mL/50mg Bed	Each
9620C18100	C18, 2.0mL/100mg Bed	Each

#### Silica

9620Si50	Silica, 2.0mL/50mg Bed	Each
9620Si100	Silica, 2.0mL/100mg Bed	Each

#### Amino (NH<sub>2</sub>)

9620NH50	Amino, 2.0mL/50mg Bed	Each
9620NH100	Amino, 2.0mL/100mg Bed	Each

#### Strong Anion Exchange (SAX)

9620SAX50	SAX, 2.0mL/50mg Bed	Each
9620SAX100	SAX, 2.0mL/100mg Bed	Each

#### Strong Cation Exchange (SCX)

9620SCX50	SCX, 2.0mL/50mg Bed	Each
9620SCX100	SCX, 2.0mL/100mg Bed	Each

### DME 96-Well Filter Plate

Cat. No.	Description	Qty
962200-1	2mL Filter Plate, 200mg Diatomaceous Earth	Ea
96160-1	1mL Diatomaceous Earth Filter Plate	Ea
96160-5	1mL Diatomaceous Earth Filter Plate	5
96260-1	2mL Diatomaceous Earth Filter Plate	Ea
96260-5	2mL Diatomaceous Earth Filter Plate	5



## Protein Crash

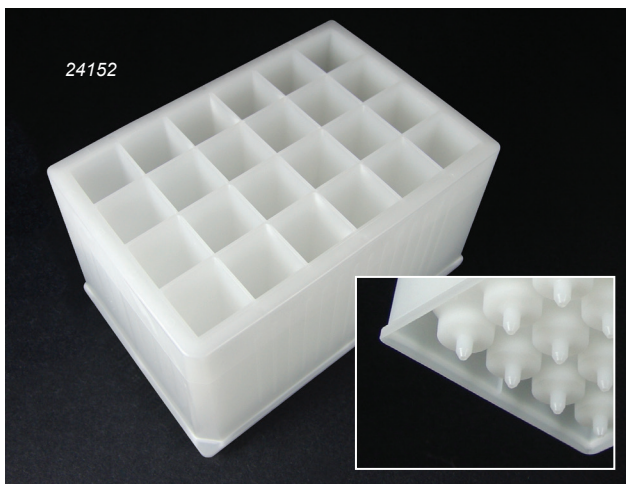
### Advantage™ 1mL 96-Well Protein Crash Plates

Cat. No.	Description	Qty
60513	1mL Protein Precipitate 96 Well Plate	1
60513-5	1mL Protein Precipitate 96 Well Plate	5



#### Product Note:

Our 1mL Protein Crash Plates are made under tight tolerances in our NJ facility. We are able to provide this product at a price point that makes protein precipitation plates a viable option once again! Check our web site or call for pricing.



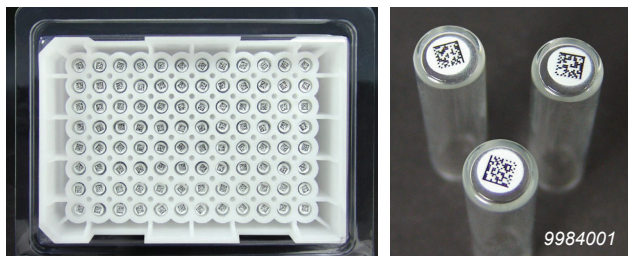
## 24-Well Filter Plates

### 24-well Filter Plates

Cat. No.	Description	Qty
24469	0.2µm PES Membrane, 10mL/well, Long Drip	25
24465	0.2µm PVDF Membrane, 10mL/well, Long Drip	25
24467	0.45µm PES Membrane, 10mL/well, Long Drip	25
24463	0.45µm PVDF Membrane, 10mL/well, Long Drip	25
241010	10µm Hydrophobic PP, 15mL Volume	25
24171	25µm PE Membrane, 10mL/well, Long Drip	25
24152	25µm PE Frit, 15mL Volume	15
2415SCX500	SCX SPE 24-Well Plate, 15ml/500mg Bed	Each

## 2D Barcoded 8x30mm Vial Inserts in Loader Tray for 96-Well Blocks

Cat. No.	Description
9984001	Barcoded 8x30mm Vial Inserts in Tray for 96-Well Blocks



## 2D Barcoded HPLC Vials

