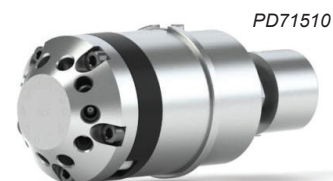


A Selection of Products for Your Workflow - From Sample to Detector

Valve Parts

Replacement Valve Pods for UHPLC Setups (Rheodyne)

Cat. No.	Description	Qty
3888	Rhebuild Kit for 2 Position, 6 Port Ultra High Pressure Stainless Steel Switching Valve (VXH593-888), Includes: 2 Rotor Seals, and Two Tools	Each
PD71510	2/10 TitanHT Replacement POD, VP, SPC3, RPC13	Each
47152-9994	RheBuild Kit	Each



Replacement Stator and Rotor Seal (Vici)

Cat. No.	Description	Qty
25204	Replacement Stator for 4-port Valve (valve model C52-23441)	Each
23234	Replacement rotor seal for 4-port valve	Each



384-Well Collection Plates

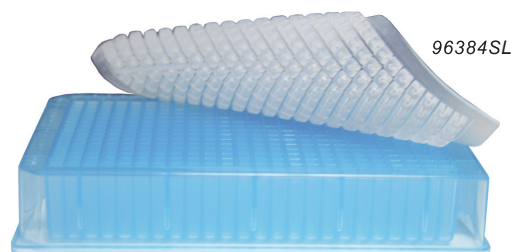
Square Well, 200µL

Cat. No.	Description	Qty
38200	200µL, Polypropylene, Square Well, Clear	24
38200B	200µL, Polypropylene, Square Well, Blue	24
38200G	200µL, Polypropylene, Square Well, Green	24
38200R	200µL, Polypropylene, Square Well, Red	24
38200Y	200µL, Polypropylene, Square Well, Yellow	24



Square Well, 400µL

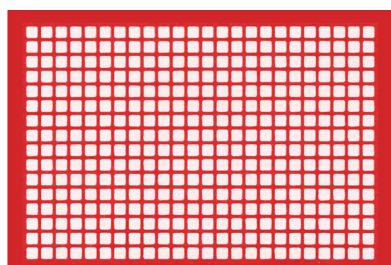
Cat. No.	Description	Qty
38400	400µL, Polypropylene, Square Well, Clear	24
38400B	400µL, Polypropylene, Square Well, Blue	24
38400G	400µL, Polypropylene, Square Well, Green	24
38400R	400µL, Polypropylene, Square Well, Red	24
38400Y	400µL, Polypropylene, Square Well, Yellow	24



384-Well Cap Mats Square Well

Cat. No.	Description	Qty
96384	Molded 384-Well Soft Silicone Square Well Cap Mat	5
96384SL	Molded 384-Well Pre-Slit Soft Silicone Square Well Cap Mat	5

38402SL



384-Well Pattern Teflon (PTFE) Adhesive Sealing Film

Cat. No.	Description	Qty
38402	Teflon (PTFE) Adhesive Film, 384 Square Well Pattern, Ultra-thin, Purple	100
38402SL	Pre-slit Teflon Adhesive Film, 384 Square Well Pattern, Ultra-thin, Red	100

FlexChrom™

Flexible Stainless Steel Tubing

Assemblies

UHPLC, Pre-Finished, One-Piece Flexible Stainless Steel Tubing with Finger Tight Stainless Steel Fittings



- 1/16" OD
- True ZDV
- Greater flexibility
- Pressure tested to 27,000 psi
- One-piece design – no brazed-on sleeves

FlexChrom™ can be ordered as single tubing or as an assembly using UHPLC stainless steel finger tight fittings (as shown).

Single UHPLC Assembly

Cat. No.	Dimensions
990141-Flex	10cm x 0.004"ID
990142-Flex	20cm x 0.004"ID
990143-Flex	30cm x 0.004"ID
990111-Flex	10cm x 0.005"ID
990115-Flex	20cm x 0.005"ID
990128-Flex	30cm x 0.005"ID

Double UHPLC Assembly

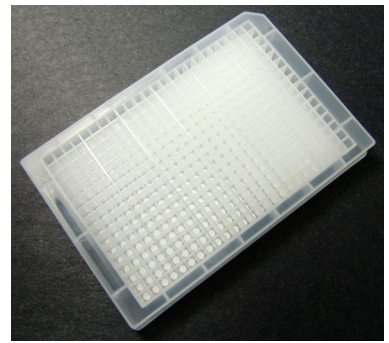
Cat. No.	Dimensions
990241-Flex	10cm x 0.004"ID
990242-Flex	20cm x 0.004"ID
990243-Flex	30cm x 0.004"ID
990211-Flex	10cm x 0.005"ID
990215-Flex	20cm x 0.005"ID
990228-Flex	30cm x 0.005"ID



PEEK™ Ultra High Pressure Fingertight Fittings

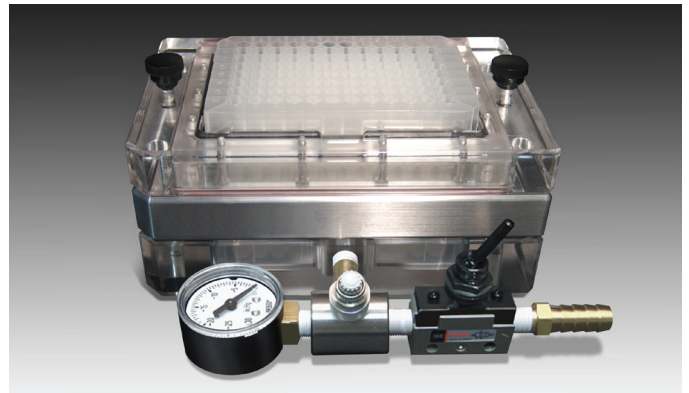
Cat. No.	Description	Pressure	Qty
66518-3	10-32 PEEK One-Piece Fitting for 1/16" OD Tubing	12,000 psi	10

All PEEK Tubing ID & Lengths also Available



General Filtration 384-well Filter Plates

Cat. No.	Description	Qty
38412	384 Well Filter Plates, 140µL, Glass Fiber, 1.2µm	10
38407	384 Well Filter Plates, 140µL, Glass Fiber, 0.7µm	10



Vacuum Manifold Filtration System for SPE Sample Preparation

- Adjustable vacuum control
- Easy access to filtrate
- Compatible with all standard filter bottom microplates
- Collect into any storage plate
- Compatible with robotic handling

Cat. No.	Description
96844	Vacuum Manifold Filtration System for SPE Sample Filtration

Echelon C18: Sub 2µm & 3µm Columns



<2µm Echelon Columns

C18 100Å 1.7µm

Cat. No.	Description
ADV8106	Echelon C18, 100Å, 1.7µm, 2cm x 2.1mm
ADV8107	Echelon C18, 100Å, 1.7µm, 3cm x 2.1mm
ADV8108	Echelon C18, 100Å, 1.7µm, 5cm x 2.1mm

3µm Echelon Columns

C18 100Å 3µm

Cat. No.	Description
ADV8302	Echelon C18, 100Å, 3µm, 20mm x 2.1mm
ADV8303	Echelon C18, 100Å, 3µm, 30mm x 2.1mm
ADV8304	Echelon C18, 100Å, 3µm, 50mm x 2.1mm

Echelon™ Microbore Columns

C18 4µm

Cat. No.	Description
ADV0305185	3.0cm x 0.5mm ID
ADV0505185	5.0cm x 0.5mm ID

Echelon™ Analytical Columns

C18 4µm

Cat. No.	Description
ADV8019	2.0cm x 2.1mm ID
ADV8021	3.0cm x 2.1mm ID
ADV8008	5.0cm x 2.1mm ID

For pricing, see
analytical-sales.com

Sprite™ Echelon™ Direct Connect C18 HPLC Columns

- 10 to 40 x 2.1mm I.D. sizes
- Fast HPLC analysis
- LC-MS applications
- PEEK™ / titanium design
- Individually tested and certified



Cat. No.	Description
Sprite AE1842	4.0cm x 2.1mm ID
Sprite AE1822	2.0cm x 2.1mm ID
Sprite AE1832	1.0cm x 2.1mm ID