

Lumidox / PCR Setup

Lumidox® II for Cell Culture / Biological Applications

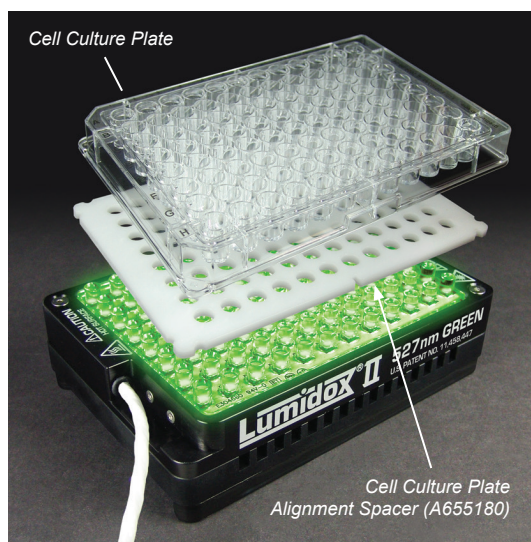
We can support your photon irradiation needs for your cell culture or biological applications, such as:

- Photoconverting live mammalian cells with Dendra protein for fluorescent imaging days after photoconversion
- Testing of light-induced toxicity of certain compounds on different cell lines for photodynamic therapy applications
- Studying the photothermal effects of compounds in live cells
- Testing photodynamic therapy of various innovative compounds on live cells
- The use of photodynamic therapy as a type of cancer treatment

Lumidox II LED Arrays with Active Cooling Base

Lumidox II LED arrays generate wavelength specific light for your cell culture or biological experimentation.

- Available in 15 wavelengths from UV, Visible through IR.
- Run at 37°C indefinitely (70°C max) at humidity <=99%.
- Active Cooling Base LED arrays are fully compatible with incubation chambers.
- Use **Lens Mat** Arrays for 24 or 96 well flat bottom collection plates, or with Analytical's 48-well TCR.
- Use **Diffused Mat** Arrays for cell culture flasks, petri dishes, larger 12-well and 6-well cell culture plates, etc..
- Active Cooling Base arrays are recommended for bio/cell culture work, but other base configurations are available.



Lumidox / Cell Culture Setup

Cell Culture Plate Alignment Spacers

These Alignment Spacers are designed for **Lens Mat** arrays (*not compatible with diffuse mat arrays*). Plate specific Alignment Spacers are currently available for 24 and 96-well cell culture plates. They provide consistent and proper alignment of the plate to the LED array. We currently produce Alignment Spacers for the following plates:

- All our Low Profile collection plates
- Cellvis P96-1.5H-N
- Greiner 655180
- Corning Costar cell culture plates
- Eppendorf cell culture plates (contact us with your specific plate)
- Thermo Scientific Nunc MicroWell plates
- Perkin Elmer ViewPlate (formerly Packard ViewPlate)

Alignment Spacers are available for any standard cell culture plate by request.

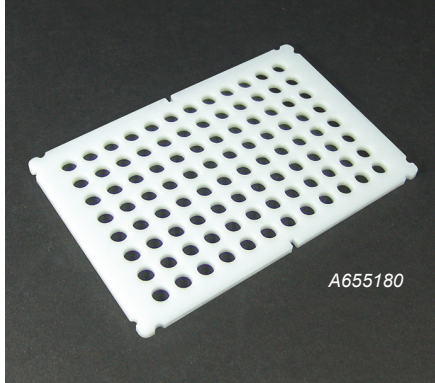
Lumidox® II Controller

- Five stages of light intensity to choose from that can be calibrated to your custom levels at the time of purchase - [see STAGE settings, page 19.](#)
- Controller has an onboard timer to reproducibly limit exposure.

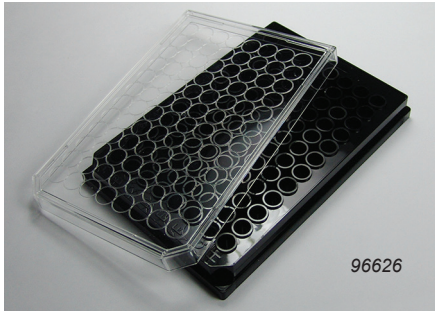




LUM296LA470



A655180



96626



24128

AT11028

24 well setup with Lumidox 24-well LED Array - See page 24 for array options

Lumidox® II LED Arrays with Active Cooling Base

Recommended wavelengths for biological and cell culture work. Other wavelengths are available.

| Catalog No. | Description | Wavelength |
|-------------|---|------------------|
| LUM296LA445 | Lumidox® II 96-position LED Array with Lens Mat & Active Cooling Base | 445nm - Indigo |
| LUM296LA470 | Lumidox® II 96-position LED Array with Lens Mat & Active Cooling Base | 470nm - Blue |
| LUM296LA527 | Lumidox® II 96-position LED Array with Lens Mat & Active Cooling Base | 527nm - Green |
| LUM296LA630 | Lumidox® II 96-position LED Array with Lens Mat & Active Cooling Base | 630nm - Red |
| LUM296LA660 | Lumidox® II 96-position LED Array with Lens Mat & Active Cooling Base | 660nm - Deep Red |
| LUM296LAWHT | Lumidox® II 96-position LED Array with Lens Mat & Active Cooling Base | White |

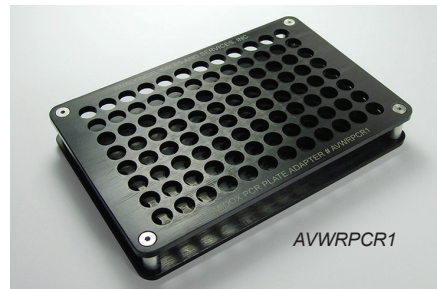
Cell Culture Plate Alignment Spacer

| Catalog No. | Description |
|-------------|---|
| A655180 | Alignment Spacer for Lumidox II LED Arrays, for use with Greiner 655180 Plate |
| AP9615HN | Alignment Spacer for Lumidox II LED Arrays, for use with Cellvis P96-15H-N Well Plates |
| A204625 | Alignment Spacer for Lumidox II LED Arrays, for use with Cell Culture Plate Part # 96624 |
| A204627 | Alignment Spacer for Lumidox II LED Arrays, for use with Cell Culture Plate Part # 96626 |
| ACRCLP01 | Alignment Spacer for Lumidox II LED Arrays, for use with Corning Cell Culture Plates |
| A6005430 | Alignment Spacer for Lumidox II LED Arrays, for use with Perkin Elmer ViewPlate (Packard ViewPlate) |
| A204628 | Alignment Spacer for Lumidox II LED Arrays, for use with Cell Culture Plate Part # 384628 |
| ACRCLP03 | Alignment Spacer for Lumidox II LED Arrays, for use with Corning 2592 Plate |
| ACRCLP02 | Alignment Spacer for Lumidox II LED Arrays, for use with Corning 3631 Plate |
| A655097 | Alignment Spacer for Lumidox II LED Arrays, for use with Greiner 655097 Plate |
| AT11028 | Alignment Spacer for Lumidox II 24-position LED Arrays, for use with 24 Deep Well Plate #24128 |

Cell Culture Plates

| Catalog No. | Description | QTY |
|-------------|--|-----|
| 96624 | 96-well Cell Culture/Imaging Microplate (Agilent) - Clear with Flat Bottom, 400µL Per Well | 40 |
| 96518 | 96 Well, Flat Bottom Clear PS Microplate, 25-340µL working volume per well | 100 |
| 96626 | 96-well Cell Culture/Imaging Microplate (Agilent) - Black with Clear Flat Bottom, 400µL Per Well | 32 |
| 961515 | Cellvis 96-well Black Polystyrene/Glass Bottom Plate with high performance #1.5 cover glass | 20 |
| 96097 | 96 Well, Black/Clear Flat Bottom Well PS Microplate, 25-340µL working volume per well, high binding, sterile | 40 |
| 384628 | 384-well Cell Culture/Imaging Microplate, 140µL Per Well | 32 |
| 24128 | 24 Deep Well Plate, V-Bottom | 50 |

Please see our website for additional collection plates



AVWRPCR1

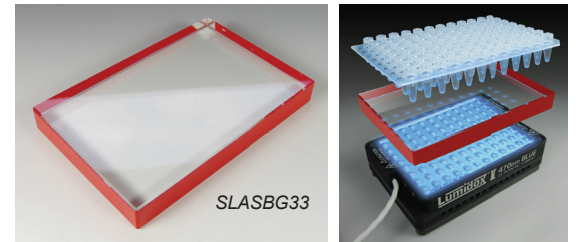
PCR Plate Alignment Spacer

| Catalog No. | Description |
|-------------|---|
| AVWRPCR1 | PCR Plate Alignment Spacer for Lumidox®II 96-position LED Lens Mat Arrays |

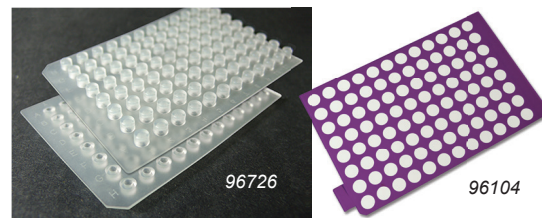
Borofloat 33 Glass Block

Use to reduce the amount of light intensity delivered to your samples by increasing the distance between the samples and the light source (LED array).

| Catalog No. | Description |
|-------------|--------------------------|
| SLASBG33 | Borofloat 33 Glass Block |



SLASBG33



96726

96104

Cap Mats and Films for PCR Plates

| Cat. No. | Description | QTY |
|----------|--|-----|
| 96726 | 6mm Silicone/PTFE Cap Mats for 96-well PCR Collection Plates | 5 |
| 96104 | Pattern Adhesive Resealable Silicone Sealing Film, Round 96-Well Pattern | 5 |