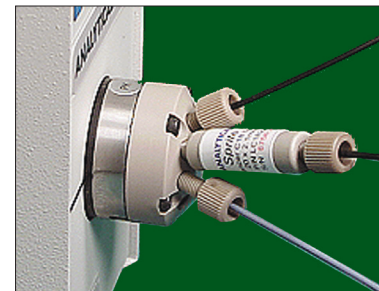


- Structurally sound to 3500psi (245 bar)
- Fingertight, leak free connection
- Ideal for LC-MS, ballistic gradients high throughput screening
- QA/QC fully tested and certified



Sprite™ narrowbore columns are high performance products for LC-MS and other high speed, small volume applications. All Sprite™ HPLC columns are individually tested and certified to ensure consistent, reliable performance. A Certificate of Analysis accompanies each column as well as the original chromatogram and comprehensive testing and sorbent documentation. The inert PEEK™ and titanium design is proven to be structurally sound to over 3500psi (245bar). Direct-Connect Sprite™ HPLC columns are leak-free and require no tools for connection. Fast finger-tight operation saves valuable time and effort.

Sprite™ Armor™

Monofunctional with unique polar and bulky end-capping

| Cat. No. | Description |
|-----------------|-----------------------|
| SPRITE AC1842 | C18, 5µm, 40 x 2.1mm |
| SPRITE A10-1842 | C18, 10µm, 40 x 2.1mm |
| SPRITE AC1822 | C18, 5µm, 20 X 2.1mm |
| SPRITE A10-1822 | C18, 10µm, 20 x 2.1mm |
| SPRITE AC1832 | C18, 5µm, 10 x 2.1mm |
| SPRITE A10-1832 | C18, 10µm, 10 X 2.1mm |

Sprite™ Lancer™

Extremely well endcapped monofunctional phase

| Cat. No. | Description |
|-----------------|-----------------------|
| SPRITE LC1842 | C18, 5µm, 40 x 2.1mm |
| SPRITE L10-1842 | C18, 10µm, 40 x 2.1mm |
| SPRITE LC1822 | C18, 5µm, 20 X 2.1mm |
| SPRITE L10-1822 | C18, 10µm, 20 x 2.1mm |
| SPRITE LC1832 | C18, 5µm, 10 x 2.1mm |
| SPRITE L10-1832 | C18, 10µm, 10 X 2.1mm |

Sprite™ Highload™

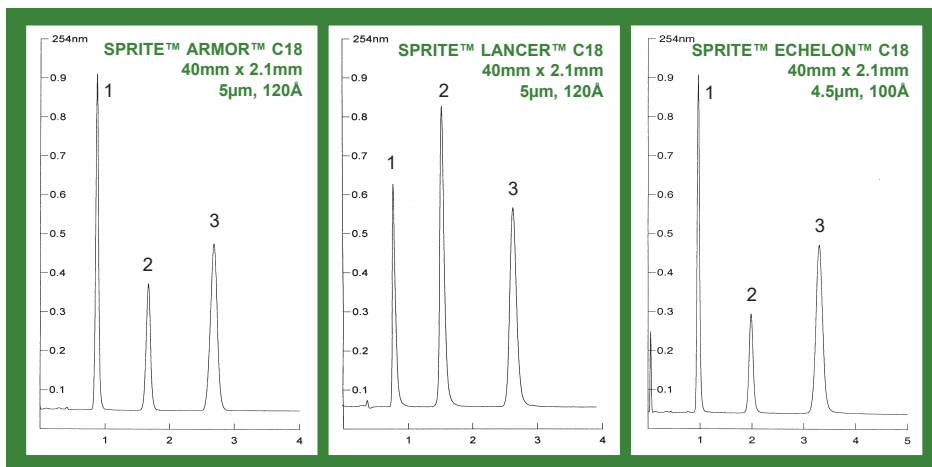
For applications requiring maximum loading and selectivity

| Cat. No. | Description |
|---------------|----------------------|
| SPRITE HL1842 | C18, 5µm, 40 x 2.1mm |
| SPRITE HL1822 | C18, 5µm, 20 x 2.1mm |
| SPRITE HL1832 | C18, 5µm, 10 X 2.1mm |

Sprite™ Echelon™

For applications requiring high resolution and selectivity

| Cat. No. | Description |
|---------------|----------------------|
| SPRITE AE1842 | C18, 4µm, 40 x 2.1mm |
| SPRITE AE1822 | C18, 4µm, 20 x 2.1mm |
| SPRITE AE1832 | C18, 4µm, 10 X 2.1mm |



Comparison of three Sprite Columns
Mobile phase: 70% MeCN in water at 200µL/min

1. Dimethyl Phthalate
2. Diphenylamine
3. Fluorine

METHOD DEVELOPMENT KIT

| Cat. No. | Description |
|---------------|---|
| SPRITE MD1842 | Contains one each 40mm x 2.1mm Columns in: ARMOR™ C18, ECHELON™ C18, LANCER™ C18 & LANCER™ PHENYL |

For pricing, see analytical-sales.com